



CCTV & DATA RECORDER

This premium Data Recorder system is designed to be installed on workboats, support vessels and all other types of smaller vessels which are exempted from carrying VDR Systems. The X-MDR system can be configured to static mode for office-based Port Authorities which monitor vessel traffic.

The X-MDR provides reliable CCTV recording, synchronised VHF Transmissions, optional bridge audio, and position data as a cost-effective solution, providing stable play back information for individual vessel movements or on vessels within a large fleet.

REAL-TIME SURVEILLANCE AND PLAYBACK

The X-MDR displays live data via the 13.3" touch screen with intuitive, user-friendly software to allow you to monitor recorded information and visual CCTV video feeds in real time.

The specially designed software can offer the user a specific time stamped selection of CCTV feeds, providing High-Definition video playback together with all other recorded vessel data.

TAILORED TO YOUR REQUIREMENTS

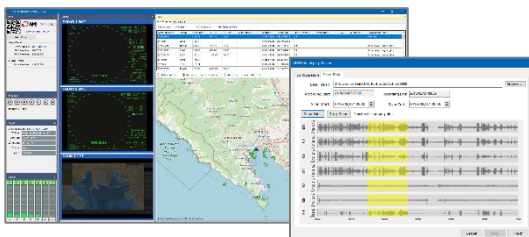
The X-MDR may be configured to your vessel's individual requirements, connecting to all popular brands of bridge equipment. With additional data recording modules, you can maximise your system with VGA and DVI image capture (Radar/Chart Plotters etc.) as well as image over LAN (IEC 61162-450)

The system has 9x NMEA 0183 inputs, 8x Bridge Audio inputs that can be configured for either microphones or VHF signals and up-to 8 CCTV inputs with expandable 2TB Storage that holds approx.10-80 days of data – depending on the amount of data being recorded.

Additional Recording Modules available;

- ECDIS over ethernet (IEC 61162-450)
- DVI Radar/Chart Plotters capture
- Additional Audio inputs
- Optional VHF interface
- Battery Backed UPS upgrade
- Additional NMEA 0183 inputs

REPLAY SOFTWARE



The unique AMI Marine Replay software provides '**Audio Scan**' and '**Jump to Incident**' functions to provide intuitive data review by engineers, ship's crew, accident investigators and even for crew training purposes.

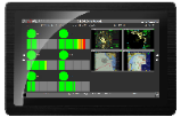
The data download process is easy and straight forward by way of simply using your laptop or Office PC and connecting it to the Ethernet port on the touch screen display, making the downloading of data easy and user friendly when required.

SPECIFICATIONS

1. TOUCH SCREEN DISPLAY - DSP-0011

FEATURES:

13.3" Display
High Resolution Touch Screen Display
VESA, Flush and Desktop mounting options
2TB Drive - LTRM (10-80 days)
- Expanded Storage is available.



POWER: Supplied from the MEU
DIMENSIONS: 320 x 210 x 68mm 2kg

2. MAIN ELECTRONIC UNIT - MEU-0018

FEATURES:

8x Audio Channels
*- Can be configured for either
Microphones or VHF Signals*
9x NMEA Data Inputs
1x Capsule Output



POWER: 24vDC
DIMENSIONS: 330 x 400 x 120mm 7.7kg

3. INDOOR MICROPHONE - MIC-0004

FEATURES:

600-ohm balanced audio
Built in Self-Test



POWER: Supplied from the MEU
DIMENSIONS: 25 x 125 x 52mm 50g

4. OUTDOOR MICROPHONE - MIC-0013

FEATURES:

IP66 Waterproof
600 ohm balanced audio
Built in Self-Test



POWER: Supplied from the MEU
DIMENSIONS: 124 x 52.2 x 26.5mm 100g

5. CCTV CAMERA - CAM-0001

FEATURES:

Ethernet connection
2 MP High-Definition resolution
IP67 and IK10 rated
Low light and IR range up to 30m



POWER: Supplied from the MEU
DIMENSIONS: 47 x 39 x 25mm 80g

6. EXTERNAL NETWORK CAMERA

INTERFACE - INT-0042

FEATURES:

Gigabit Ethernet switch hub
8x PoE ports for camera connection
2x Standard output ports



POWER: Supplied from the MEU
DIMENSIONS: 177.5 x 104 x 26mm 100g

UPGRADES

VIDEO CAPTURE CARD KIT

FEATURES:

Video inputs such as ECDIS or Radar
Accepts video signal of up to 1920x1200
Comes with required fittings, DVI to VGA
converter and USB cable.
A Capture Card Frame required for this unit.



UPS BATTERY BACKUP UPGRADE

FEATURES:

110 to 220vAC 50,60Hz
Battery Backed
Auto switch over to Battery Input on AC
fail



EXTENDED STORAGE UPGRADE*

FEATURES:

Increase system storage up to 4TB
Allows for approx. 1-4 months of data



*All features and specifications are preliminary and may change without notice