

Walker 2090

Heated Ultrasonic Wind System

The Walker 2090 uses a Solid State Ultrasonic Wind Speed & Vane Direction Sensor, the P392. This gives high accuracy in a robust compact package...

with no moving parts to wear out!

The P392 masthead is a further development on the very successful P292. To the already proven ultrasonic wind component is added an automatic heater for operation in cold weather.

The Sensor connects directly to a standard Walker DIN 144 wind speed & direction indicator, the P1249, which gives digital displays of relative wind speed & direction. Wind direction is also displayed on a simulated analogue display by use of OLED technology.

True wind systems are available by using this sensor with the Walker P1066 True Wind Interface Unit.



Specification

System

The sensor converts wind speed and direction into serial digital data. Data is displayed by the P1249 Indicator in digital format and also in analogue for wind direction. The instrument interfaces in NMEA 0183/RS422 to other ship systems. Sentence – MWV

Sensor

Mounting by base flange, with 3 elongated slots.
Sealed to IP65 (when correctly mounted)
Weight: 1.6 Kg
plus 3kg for 40 metre cable and connector assembly.
Connection:
P293 cable carries 24v and NMEA signal
P393 cable carries high current power for the heater

Indicator

Standard DIN 43700 case; 144 x 144 mm
– depth 110mm
Weight: 1.2 Kg
Mounted by panel clips or drilled frame supplied.
Cables: 4.5 to 7 mm dia.
Controls: Illumination
Lamp Test
Select Units, Knots, Metres/Sec and Kilometres/Hour.
Front panel splash proof when installed correctly

System Parameters

Input voltage: 24v DC 40mA & 24v DC 6A

Wind Speed Measurement:
Range 0–116 knots
Accuracy +/- 2% (@ 24kts)
Resolution 0.02 knots

Wind Direction measurement
Range 0°–359°
Accuracy +/- 3° (@ 24 kts)
Resolution 1°

Environmental
Operating Temperature:
Sensor -340°C to +70 °C with heating
Indicator 0 °C to +55 °C
Storage Temperature
Sensor -40 °C to +90 °C
Humidity <5% to 100%

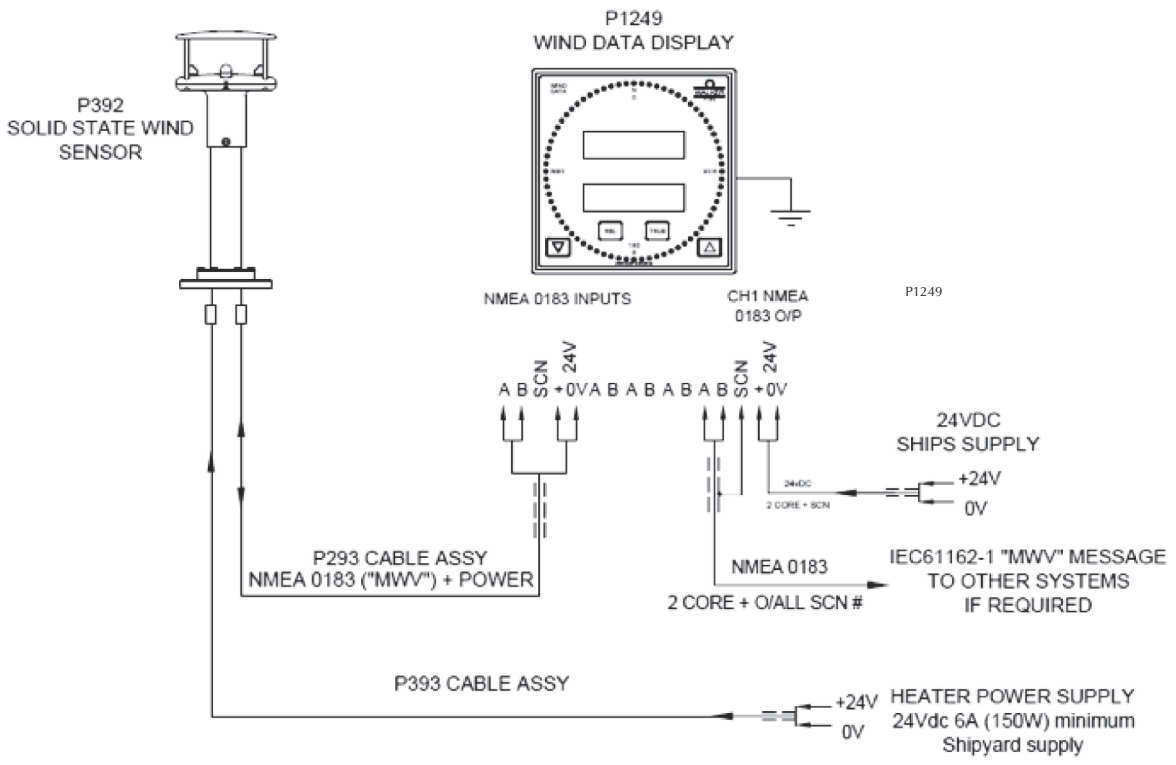
Option:

2090 Wind Speed & Direction True System,
P1066 True Wind

Proven Accuracy and Reliability



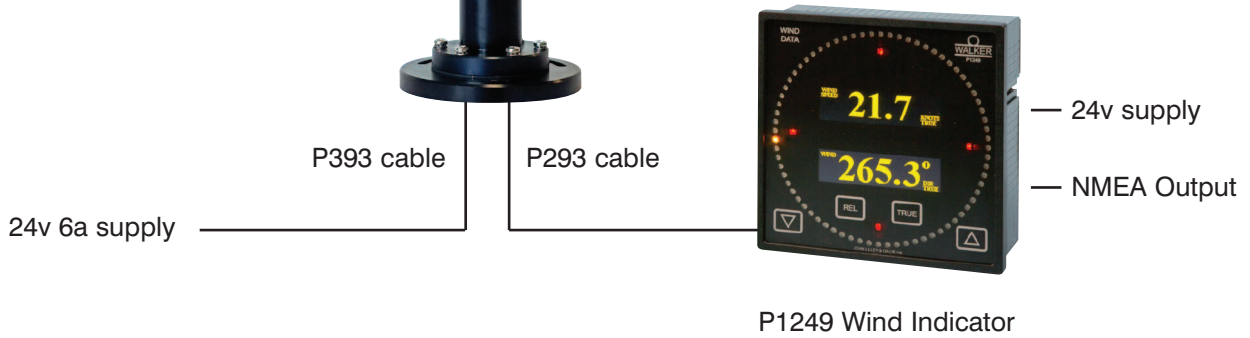
EST. 1838



P392 masthead



Tested to
IEC 60945
IEC 61162-1
IEC 62288



CE Indicator Type Approved to
EMC European Directive IEC 60945

In accordance with our policy of continuous development, changes may be made from time to time without prior notice.



Distributor
AMI Marine Ltd
+44(0)2380 480450
sales@amimarine.com
amimarine.com

