

## SUPERIOR S-VDR SYSTEM SUPPLIED AT SENSIBLE PRICES

The X2 simplified voyage data recorder has been designed with the combination of a high-performance main processor and Solid State technology, offering extremely reliable performance with a superior user experience.

Exceeding the MSC.333(90) regulations, the X2 has been designed as a fit and forget system, although its high quality 8" (or 9.7") touch screen can be a useful bridge monitoring tool.

## RETROFIT SPECIALITY

Retrofit installations are quick and easy thanks to the X2's three wire microphone solution. This allows for the existing cabling from previous S-VDR systems to be incorporated, removing the requirement for new cable runs.

In addition, the new larger cable management system accommodates bulky VGA connectors and thick power cable to pass into the main unit along with the smaller data cables.



OR



## PLENTIFUL STORAGE

The Fixed and Float Free capsules have a storage capacity of 64GB, allowing in excess of the required 48 hours of data storage. The internal Solid State drive has a capacity of 1TB which allows for around 60 days of storage, double that of the required 30 days as specified by MSC.333(90) regulations.

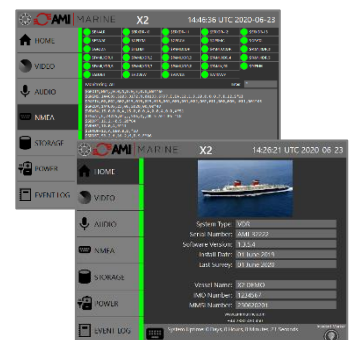
## REAL-TIME DATA DISPLAYS

The main user interface is intuitive and user friendly, allowing seamless access to the recording data in real time along with simple indications in the event of sensor loss.

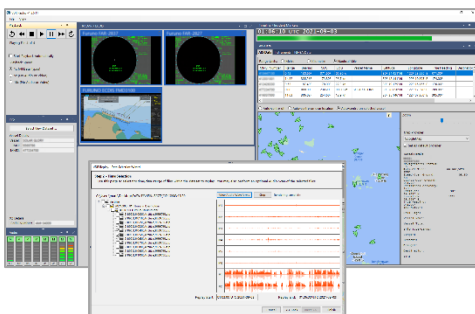
All data is easily viewed, including separate Radar and ECDIS images, audio channels, storage information and all recorded bridge and navigation data.

The colour touch screen display can easily switch between day time and night vision mode for operation in darkness.

An incident marker control is present on each page to allow the user to add an entry into the event log for ease of data playback, with a "test on demand" feature which tests all aspects of the system as required.



## REPLAY SOFTWARE



The AMI Marine Replay software is unique due to having 'Audio Scan' and 'Jump to Incident' functions to provide intuitive data review by engineers, ship's crew and accident investigators.

The data download process is easy and straight forward by using your laptop or Office PC and connecting it to the Ethernet port on the touch screen display, making downloading data easy in case of incident.

## SPECIFICATIONS

### STANDARD SUPPLY SCOPE



#### MAIN ELECTRONIC UNIT - MEU-0017

**FEATURES:** 10x Audio Channels (8 bridge audio, 2 VHF audio),  
20x NMEA Data Inputs  
2x Video Inputs (ECDIS/Radar)  
additional Video Input options available  
2x Ethernet interface for Ship's Network (ECDIS)  
1x 1TB Drive - LTRM (30 Days)  
Additional 1TB Drive RT Backup option available

**POWER:** 24vDC

**DIMENSIONS:** 500 x 570 x 160mm 12kg



#### EXTERNAL MICROPHONE - MIC-0012

**FEATURES:** IP67 Waterproof  
Built in Self-Test  
Environmental controls for audio optimisation

**POWER:** 12vDC supplied from the MEU

**DIMENSIONS:** 124 x 52.2 x 26.5mm 100g



#### INTERNAL MICROPHONE - MIC-0011

**FEATURES:** Built in Self-Test

**POWER:** 12vDC supplied from the MEU

**DIMENSIONS:** 124 x 52.2 x 26.5mm 100g



#### TOUCH SCREEN CONSOLE -8" - DSP-0019

**FEATURES:** High Resolution Touch Screen Display  
"On Demand" System Performance Test  
Ethernet Interface for Data Collection  
VESA mounting option

**POWER:** 24vDC supplied from the MEU

**DIMENSIONS:** 188 x 245 x 56mm 1.5kg



#### UNINTERRUPTED POWER SUPPLY - PSU-0014

**FEATURES:** 110 to 230vAC 50,60Hz  
Battery Backed  
AC Monitoring  
Battery Health Monitoring

**POWER:** 24vDC Output

**DIMENSIONS:** 400 x 300 x 210mm 9.8kg/22.8kg

### CAPSULE OPTIONS



#### FIXED HARDENED CAPSULE - CAP-0001

**FEATURES:** 64GB Solid State storage  
48 hours recording  
Supplied with 15m Cable  
Supplied with PT9 Ninety ULB

**POWER:** 24vDC supplied from the MEU

**DIMENSIONS:** 153 x 180 x 236mm 12kg

OR



#### FLOAT FREE CAPSULE - CAP-0002

**FEATURES:** 64GB Solid State storage  
48 hours recording  
Simple Ethernet connection

**POWER:** Supplied from the MEU

**DIMENSIONS:** 293 x 197 x 140mm 1.1kg

### OPTIONAL EXTRAS



#### ANALOGUE INTERFACE - INT-0024

**FEATURES:** 16x Input channels up to +/- 30V max  
NMEA Data output  
Isolation from ground and other channels  
Data pass through option  
Jumper selection for AC/DC input signals

**POWER:** 24vDC (18~32V)

**DIMENSIONS:** 180 x 300 x 70mm 1.5kg



#### DIGITAL INTERFACE - INT-0025

**FEATURES:** 32x input channels  
Wide input voltage range  
Data pass through port  
Input and Output LEDs for performance monitoring  
Certified to IEC 60945

**POWER:** 24vDC (18~32V)

**DIMENSIONS:** 275 x 175 x 70mm 1.3kg



#### TOUCH SCREEN CONSOLE -9.7" - DSP-0020

**FEATURES:** High Resolution Touch Screen Display  
"On Demand" System Performance Test  
Ethernet Interface for Data Collection  
VESA mounting option

**POWER:** 24vDC supplied from the MEU

**DIMENSIONS:** 280 x 219 x 38.50mm 1.8kg



#### VIDEO CAPTURE CARD KIT - KIT-0012

**FEATURES:** Additional video inputs such as ECDIS or Radar  
Accepts video signal of up to 1920x1200  
Comes with required fittings, DVI to VGA converter and USB cable

**DIMENSIONS:** 170x140x120mm 400g