

MD69BR/BO SHIP'S BEARING REPEATER BOWL

- IP67 Weatherproof Marinised Bearing Repeater Bowl
- Dual scale 36:1 Precision Compass Card Display
- NMEA 0183 Digital Input
- True / Magnetic Source Indication
- Local and Remote Dimming Control
- Available to Military Specifications
- Finished in RAL7040 Window Grey



OVERVIEW

The MD69BR/BO from MARINE DATA is our standard dual scale NMEA-based heading repeater available as a bowl-only option, ideal for retrofit, replacement or panel mounting. Designed for taking celestial and terrestrial bearings. Equipped with a 36:1 precision dual scale compass card display, digital heading data (ship's heading) may be conveniently displayed at any location on a vessel.

With a range of mounting options and accessories, the MD69BR/BO offers a bearing repeater solution for most locations and may be bulkhead, surface, panel or stand mounted. Finished in grey to complement other external marine navigation equipment.

The MD69BR/BO Bearing Repeater from MARINE DATA: flexible in application, easy to install and simple to maintain.

SPECIAL FEATURES

- Fits into the standard MARINE DATA gimbal ring system as used with the MARINE DATA MD69/BR Repeater (SKU MNE-0004)
- May be flush-mounted in a panel
- Dual scale 36:1 precision concentric dial display
- Balanced for optimal taking of bearings using the optional MD69AZI Azimuth Sight
- Automatic selection and prioritisation of NMEA heading data type
- Automatic warning of loss of valid heading data
- Automatic detection of a previously lost heading data type without requiring a reset
- True / Magnetic Source Indication
- Local and remote dimming control

APPLICATIONS

- Repeats the heading display of a ship's magnetic or gyro compass at a convenient location on a vessel
- Allows celestial and terrestrial bearings to be taken when used in conjunction with the MD69AZI Azimuth Sight or the MD69BC Bearing Circle. If gimbal-mounted, the MD60A2K Telescopic Alidade is recommended for making detailed azimuth measurements with this unit.

RELATED PRODUCTS & SYSTEMS

- MD69BR Dual Scale Bearing Repeater, complete with gimbal ring and trunnion
- MD69AZI Azimuth Sight with sun filters, Thomson Pattern
- MD69BC Bearing Circle with sighting vanes and shadow pin
- MD60A2K Precision Telescopic Alidade with 7x 38 mm optics
- MD69/21 Pelorus Stand Assembly, complete
- MD69/22 Bearing Compass Repeater on Bulkhead Mount, complete



AMI Marine Ltd
+44(0)2380 480450
sales@amimarine.com
amimarine.com

MARINE DATA SYSTEMS LTD. reserves the right to make changes to its products and specifications without notice. Printer-friendly version. ©MARINE DATA 2017 ver05 rev03



PHYSICAL

- Weight: 7.0 kg (optimally balanced for Azimuth Sight)
- Dimensions: H 127 mm W 271 mm; Body Ø 246 mm
Outer dial Ø 185 mm; Inner dial Ø 95 mm
Verge ring 20 mm (visible)
- Mounting options: Gimbal & Trunnion; Pelorus Stand and Bulkhead Bracket options available
- Connections: Multicore cable through watertight gland
- Construction: Aluminium alloy enclosure
- Finish: RAL7040 Window Grey, semi-gloss

ELECTRICAL

- Power Supply: 24 V dc 8 W nominal (22-31 V dc)
- Data input: RS422 NMEA 0183; 4800 Baud; others available
- Data sentences: HDT, HDG and HDM; selected in descending order of priority
- Cable: 2.5 m multicore data cable tail

OPERATIONAL

- Performance: $\pm 0.01^\circ$ resolution
- Follow-Up Rate: 20° per second
- Gimbal Action: $\pm 45^\circ$ pitch and roll
- Display: Dual scale 36:1 rotating dial display
- Heading LEDs: Blue = True Heading; Yellow = Magnetic Heading
- Resolution: Outer scale marked at 1° , 5° , 10° & 45° ; Inner scale marked at 0.1° & 1°
- Illumination: LED array with local & remote dimming control; red tint
- Error Indication: Loss of valid data: Dial oscillates $\pm 35^\circ$ about the last known good heading; dial illumination flashes

ENVIRONMENTAL

- IP rating: IP67
- Operating temp: -25°C to $+55^\circ\text{C}$
- Shock: STANAG 4549 - NS (0.03; 3.0; 300)
- Vibration: MIL-Std-167-1A / IEC 60945
- EMC: MIL-Std-461E / IEC 60945
- Thermal: MIL-Std-810F / IEC 60945
- Noise: MIL-Std-1474D ≤ 53 dB
- Compass: Safe Distance 100 cm

APPROVALS

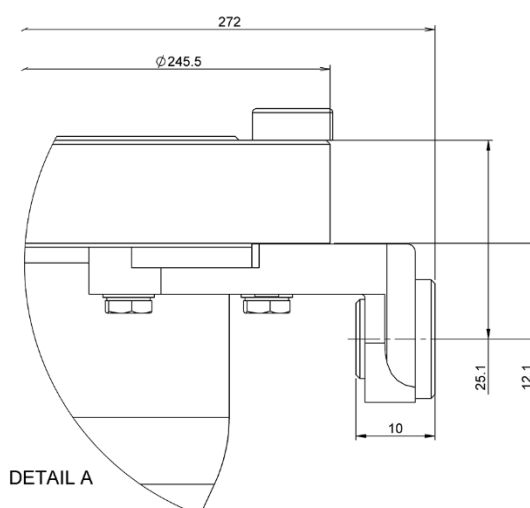
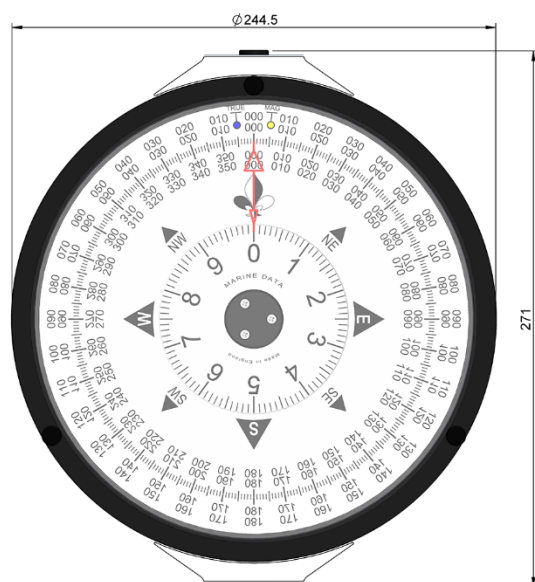
- Type Approval: Germanischer Lloyd (GL)

ADDITIONAL INFORMATION

- Supplied: Bowl only, with 2.5 m captive cable. Mountings and junction boxes are optional extras

ACCESSORIES

- MD69AZI: Azimuth Sight with sun filters, Thomson Pattern
SKU F069051
- MD69BC: Bearing Circle with sighting vanes and shadow pin
SKU F069052
- MD60A2K: Precision Telescopic Alidade, SKU F060001
- MD69CPC: Canvas Protective Cover, SKU CM88526



ALL DIMENSIONS MM

